

Timber Species & Standard Polish Colours

Using the finest kiln-dried hardwood from PEFC managed European forests, we offer 4 timber species with a variety of surface finishes. Limitations of the printing process, together with variations in natural materials means that printed depictions of colour will be approximate.

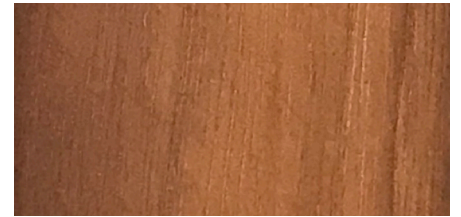
We offer Beech as standard (please refer to P30 Natural Beech) as well as Ash, Oak and Walnut at a surcharge.



Ash Species



Oak Species

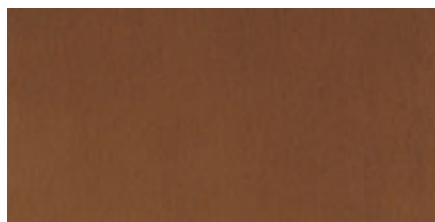


Walnut Species

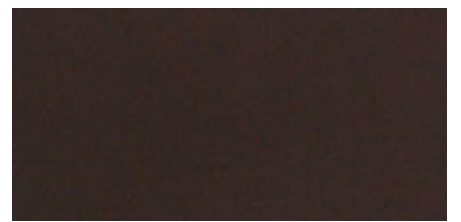
We offer a standard range of 11 polish colours:



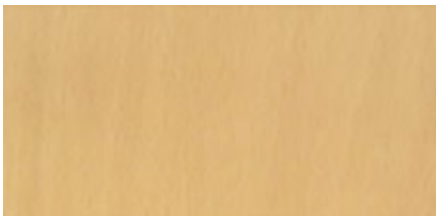
P30 Natural Beech



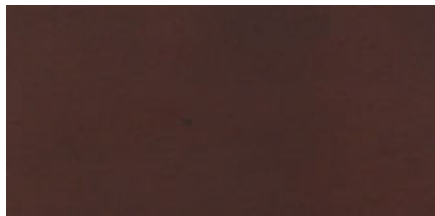
P55 Light Walnut



P36 Dark Oak



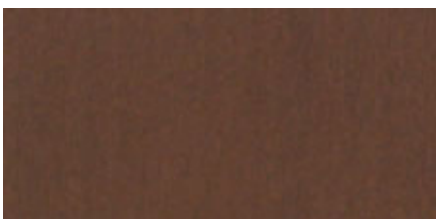
P54 Light Oak



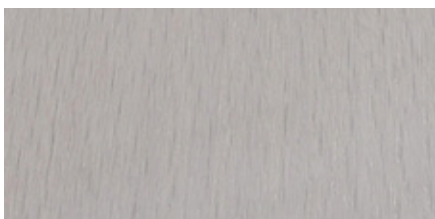
P33 Wenge



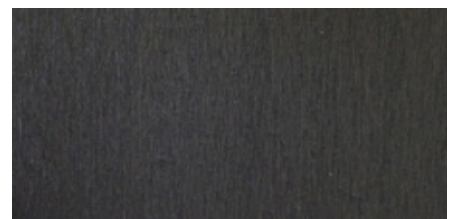
P38 Teak



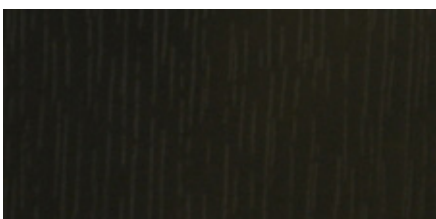
P37 Walnut



P56 Limed Oak
[Only available when oak species is specified.]



P59 Grey Oak



P60 Black



P70 White

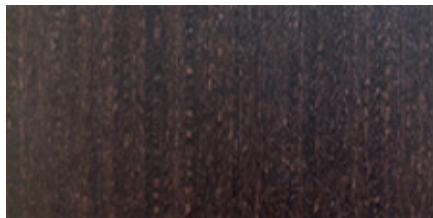
Realwood Laminate Options

As standard we offer a selection of Woodlam realwood laminates for table tops. Woodlam is a realwood laminate with a high resistance mealmine overlay. This specification will provide the highest level of heat resistance, including cigarette burns and impact damage and is therefore ideal for contract use, more formal dining and conference or function areas.

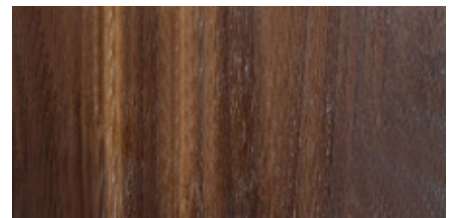
The below options are matched with our standard polish colours. They are all Woodlam apart from the black and white options.



Ash Silk used with P30 Natural Beech



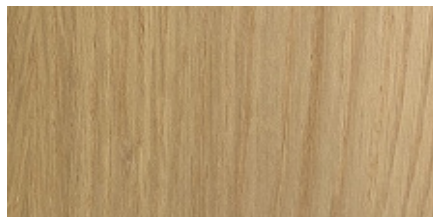
Wenge RC Silk used with P33 Wenge and P36 Dark Oak



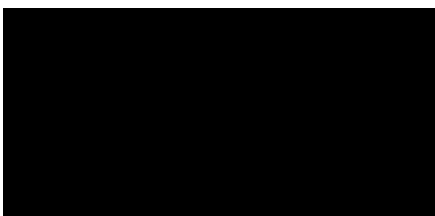
Walnut Silk used with P37 Walnut



Teak RC Silk used with P38 Teak and P55 Light Walnut



Oak Silk used with P54 Light Oak



Pfleiderer VV Volcanic Black used with P60 Black



Egger Solid Premium White used with P70 White

Wood Effect Laminate Options

If realwood laminate is not required for your specification, we are able to offer our standard selection of wood effect laminates. These have a robust melamine resin surface, so again, just like a realwood laminate, provide the specification required for all sectors of contract use.

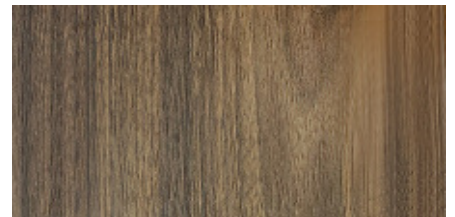
The below options are matched with our standard polish colours. They are all Fleiderer apart from the additional P59 grey Oak ABET option.



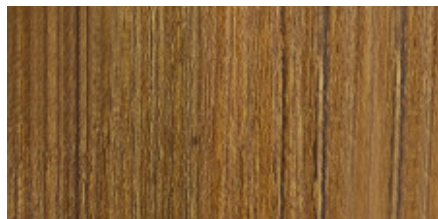
Kent Beech used with P30
Natural beech



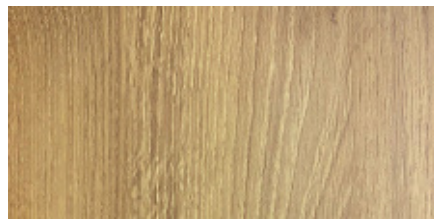
Mocha Oak used with P33 Wenge
and P36 Dark Oak



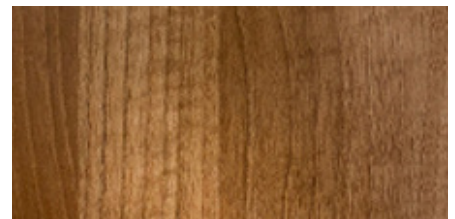
Okapi Walnut used with P37
Walnut



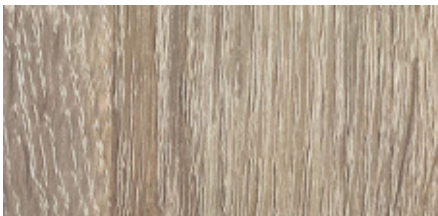
Golden Teak used with P38 Teak



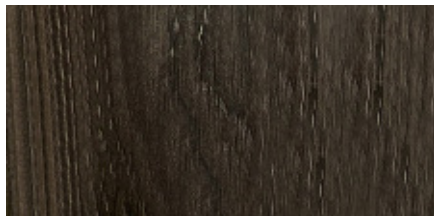
Lancashire Oak used with P54
Light Oak



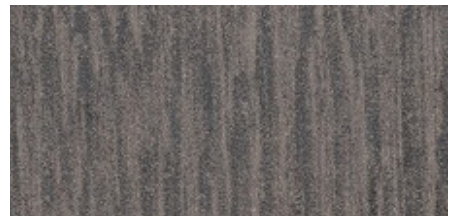
French Walnut used with P55
Light Walnut



Sonoma Oak used with P56
Limed Oak



Dark Mountain Oak used with
P59 Grey Oak



ABET Print 656 used with P59
Grey Oak